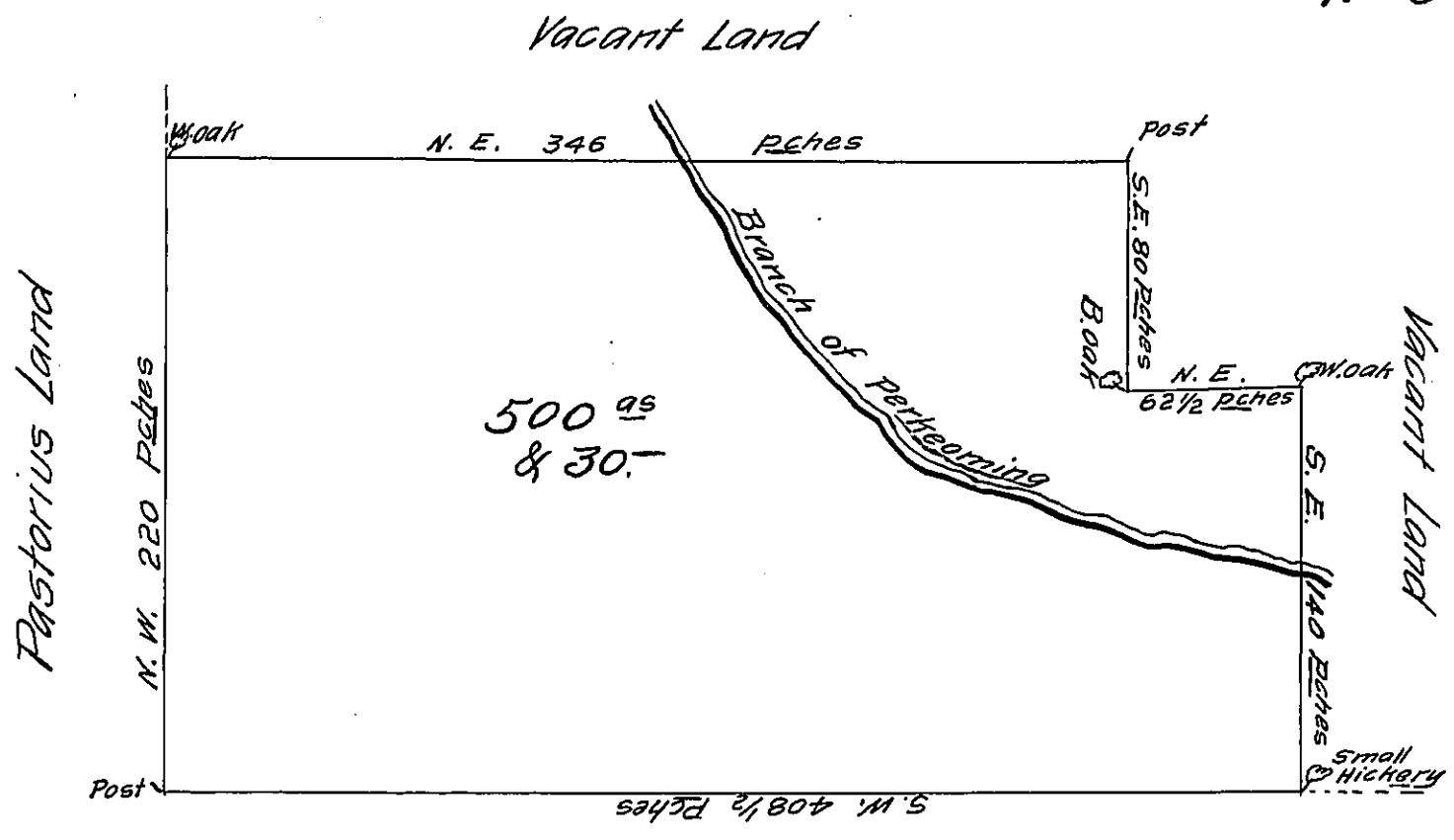


No 5



Murray's Land

By virtue of a Warrant from the Trustees of the Proprietors, dated the sixteenth <sup>out</sup> Day of November A.D. 1727 to William Allen there was laid out to James Bingham in right of s<sup>d</sup> Allen a certain Tract of land situate on a Branch of Perkeorming in the County of Philadelphia, Beginning at a post in the line of Daniel Pastorius' land being also a corner of Richard Murray's land thence extending by s<sup>d</sup> Pastorius' land northwest two hundred & twenty Pches to a white oak marked for a corner, thence north east three hundred forty-six perches to a post thence southeast eighty perches to a black oak thence northeast sixty-two Pches & an half to a white oak thence south east One hundred forty Pches to a small Hickery in s<sup>d</sup> Murray's line (the four last courses by vacant land) Thence by s<sup>d</sup> Murray's land south west Four hundred eight Pches and an half to the place of beginning Containing Five hundred Acres ~ besides the usual allowance of 6 % Cent.

Surveyed y<sup>e</sup> 24<sup>th</sup> July 1730

Nicholas Scull -

IN TESTIMONY that the above is a copy of the original remaining on file in the Department of Internal Affairs of Pennsylvania, made conformably to an Act of Assembly approved the 16th day of February, 1833, I have hereunto set my Hand and caused the Seal of said Department to be affixed at Harrisburg, this twenty-second day of July 1910.

Henry Howell

Secretary of Internal Affairs.